

How to Paint an Owl Silhouette & Moon



This painting tutorial will show you how to paint an easy autumn owl silhouette with the moon in the background. You can also do an optional face on the owl.



Acrylics Owl Silhouette **Step By Step Painting Tutorial**



Materials

This post contains affiliate links to Amazon.com.

- Acrylic Paint
- Paint Colors:
 - Red Cadmium Medium Hue
 - Cadmium Orange Hue
 - Cadmium Yellow Medium Hue
 - Deep Violet
 - Mars Black
 - Titanium White
- 16" x 20" Canvas (You can use any size you want!)
- Paint Brushes
 - $\frac{3}{4}$ " Flat Brush
 - $\frac{1}{2}$ " Angle Brush (or flat brush or similar size angle brush)
 - #4 Round Brush
- 9" Paper plate for tracing the moon

Directions At A Glance:

How to Paint An Owl & Moon



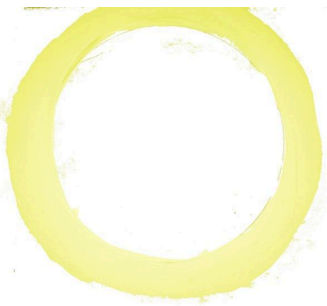
www.StepByStepPainting.net

Step By Step Pictures:

1. Trace A Circle For The Moon & Yellow Ring



Trace a 9" paper plate with a pencil for the moon.



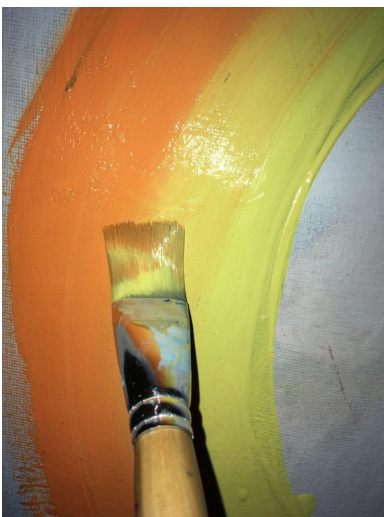
Paint a yellow ring around the moon using a $\frac{3}{4}$ " flat brush. This is about 1" thick but might be thinner or thicker depending on canvas size.

2. Paint The Second Ring & Blend



Then paint an orange ring around the yellow ring. The orange should be about the same thickness.

3. Blend the Colors



Blend the two colors together. You can use a wet brush if your paint is still wet and do the "wet on wet" technique to blend the two colors together. If your paint is too dry, try "double loading" your brush with yellow and orange and blend the two colors that way. You can also use a soft dry brush to go over and blend the colors. Or...you can mix orange and yellow on the palette and then apply that color in between the rings!



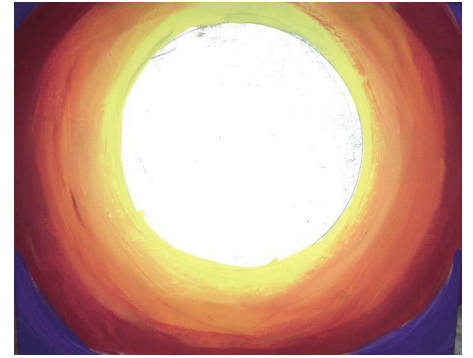
The two colors are blended together.

4. Paint Red Ring and Blend



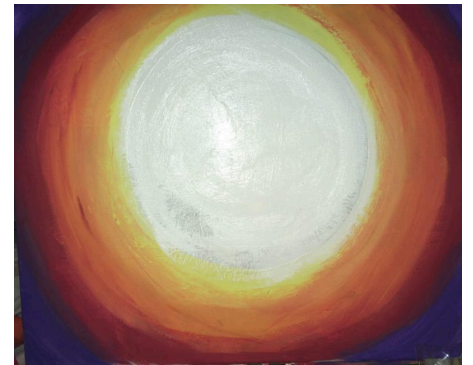
Next, paint a red ring around the orange ring. Then blend the red with the orange in the same way you blended the yellow with the orange.

5. Paint The Purple Sky & Blend



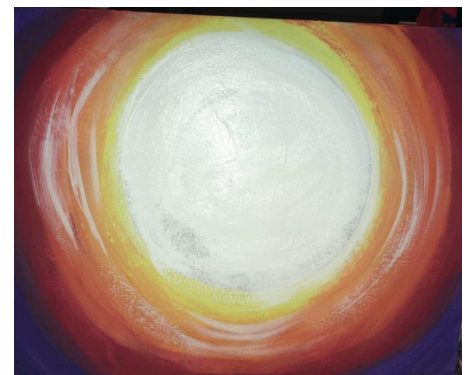
Paint the rest of the canvas (except the moon) purple. Blend the purple with the red.

6. Paint The Moon White



Paint the moon in a solid coat of white. Try to keep your strokes circular. You can use the $\frac{3}{4}$ " wash brush for this.

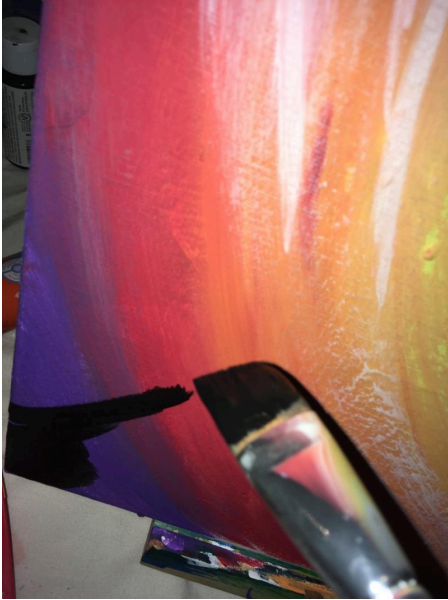
7. Paint Moonbeams



Add some white "C" lines of white around the moon for added interest. You can do this dry brush or wet brush. Use the $\frac{3}{4}$ "

wash brush (the sides of the bristles).

8. Paint The Tree Branch



Get your angled brush and load it with black paint. Hold the brush to where the longer bristles are on the left. In the lower left corner, start painting a large branch.

Follow the branch steps below to form the silhouette of the branches.



9. Paint The Owl

Use either the angle brush or round brush for this step! Paint two curved lines for the body of the owl.



Then paint a circle for the head.



Paint two ears.



Fill in the owl solid black. Paint a tail that goes below the branch.



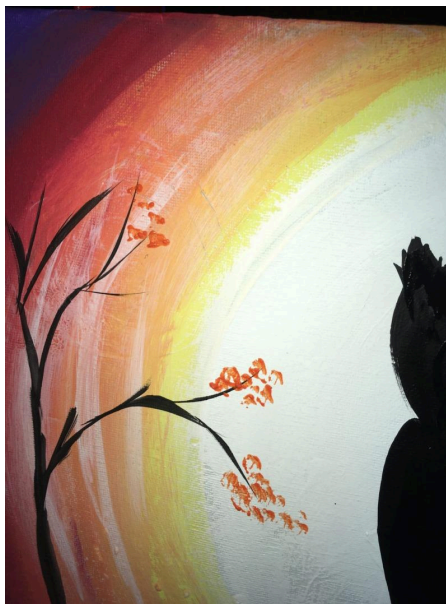
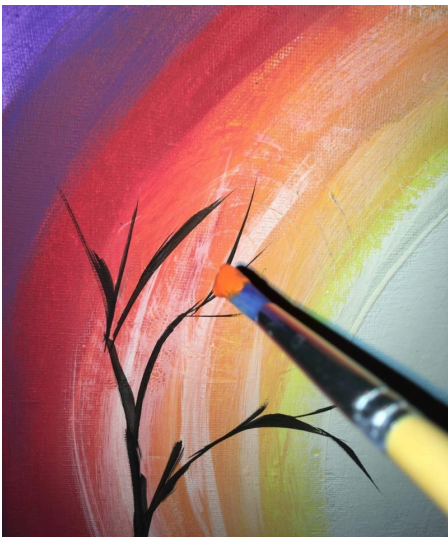
10. Optional: paint some details on the silhouette



You can add details on the owl such as facial features and talons. Use the round brush and white to paint the beak and talons. Use the yellow to paint the eyes.

11. Paint Leaves

Use the round brush to paint little dots of leaves on the branches. Use a combination of the red, orange and yellow and paint little clusters of dots everywhere.



12. Finished!

